

geotomographie

manufacturer of seismic borehole equipment



SBS42 | P-Wave Source

The borehole source SBS42 generates compressional (P-) waves in water-filled boreholes and is used for P-wave tomography. The energy required for the SBS42 probe is provided by the Impulse Generator .

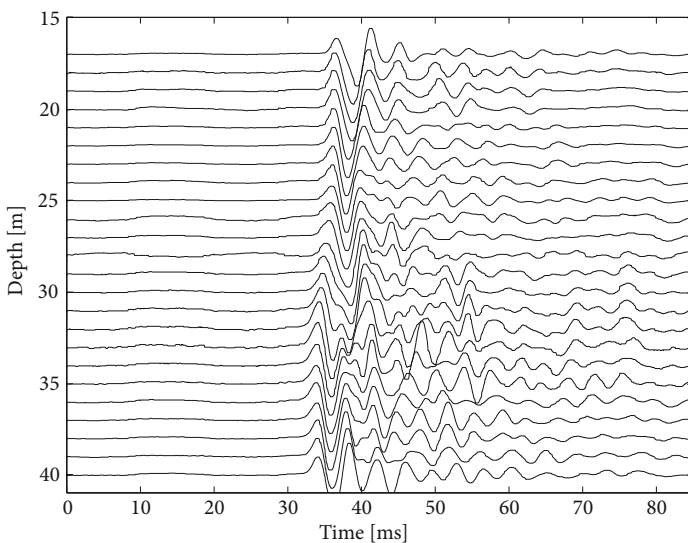


SBS42 on drum.

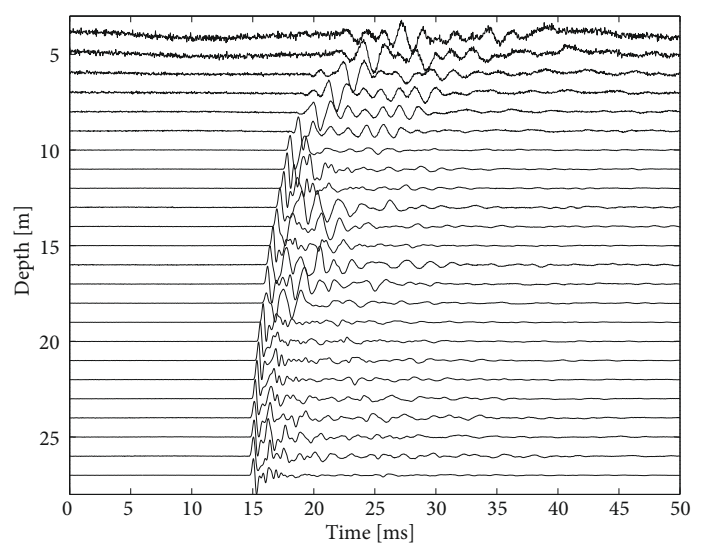
Technical Details

- Generated wave types:** P
- Signal frequencies:** Up to 5 kHz (depending on geology and borehole distance)
- Operational depth:** Up to 500 m
- Source length:** 645 mm
- Source diameter:** 45 mm
- Source weight:** 3.8 kg
- Cable weight per metre:** 206 g
- Cable strength:** 3400 N
- Borehole diameter:** Min. 50 mm
- Clamping system:** Not required
- Depth indicator:** Cable marking every 2 m
- Connector:** To Impulse Generator
- Storage:** On drum

Data Examples



Hard rock
Borehole distance: 100 m



Unconsolidated saturated sediments
Borehole distance: 25 m